



General Instructions

FOR LACTINA® AND
CLASSIC™ BREASTPUMP KITS

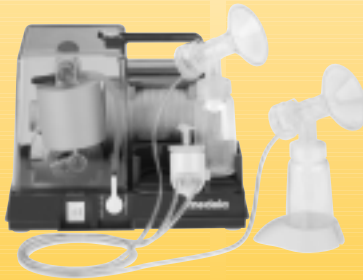


Table of Contents

Important Safeguards	1
Cleaning and Sterilization	2
Hygiene	2
Preparation	2
Prior To First Use	2
In the Hospital	2
At Home	3
After Each Use	3
Tubing Care	3
Care of Piston/Cylinder Assembly	4
Lactina Parts List	5
Lactina Instructions For Use	6
Classic Parts List	9
Classic Instructions For Use	10
Manual Breastpumping	13
Storing Breastmilk	15
Thawing Breastmilk	16
Troubleshooting	16

Medela, Inc., P.O. Box 660, McHenry, IL 60051-0660
Phone: 800-435-8316 Fax: 815-363-1246
Email: customer.service@medela.com www.medela.com

Medela Canada Inc., 4090B Sladeview Crescent, Unit 2
Mississauga, Ontario L5L 5Y5 Canada
Phone: 1-800-435-8316 or (905) 608-7272 Fax: 1-800-995-7867 or (905) 608-8720
Email: info@medela.ca Internet: www.medela.ca

Medela and Lactina are registered trademarks of Medela in the USA. Classic and PersonalFit are trademarks of Medela, Inc. in the USA and in other countries. Applications for registration of Medela is pending in other countries.

© 2004 Medela, Inc. Printed in the U.S.A.



IMPORTANT SAFEGUARDS



When using electrical devices, basic safety precautions should always be followed, including the following:

READ ALL INSTRUCTIONS BEFORE USE

DANGER: To reduce the risk of electrocution:

1. Always unplug electrical devices immediately after using. Separation from the mains is only assured through the disconnection of the plug and socket connection.
2. Do not use while bathing or showering.
3. Do not place in or drop motor unit into water or other liquid.
4. Do not reach for any electrical device if it has fallen into water. Unplug immediately.
5. Do not store or use this product where it can fall or be pulled into a tub or sink.

WARNING: To reduce the risk of burns, electrocution, fire or injury to persons:

1. The pump should never be left unattended when plugged into an electric outlet.
2. Use the pump only for its intended use as described in this manual.
3. Do not use accessory attachments not recommended by the manufacturer, as this may cause hazards.
4. Never operate an electrical device if it has a damaged cord or plug, if it is not working properly, if it has been dropped or damaged, or if it has been dropped into water.
5. Keep the cord and all components away from heated surfaces.
6. Do not use outdoors.
7. Only use the electric cord that comes with the Lactina or Classic Breastpump.
8. The kits are personal care items and are not to be shared between mothers without proper sterilization to prevent the risk of cross contamination.
9. Supervision is necessary when this product is used in the vicinity of children.
10. Make sure the voltage of the device is compatible with the power source.
11. Pump only with the motor in an upright position.
12. Do not use while sleeping or overly drowsy.
13. There are no user-serviceable parts inside the Lactina or Classic Breastpump. DO NOT ATTEMPT TO REPAIR THE LACTINA OR CLASSIC BREASTPUMP YOURSELF.

SAVE THESE INSTRUCTIONS

Cleaning and Sterilization

Unless instructed otherwise by your health care provider.

IMPORTANT

This product's kit is a single-user item unless properly sterilized between users. Use by more than one user without adequate sterilization may pose a health risk and voids the warranty.

Hygiene

Wash hands before touching breasts or containers, and avoid touching the inside of containers or lids.



Preparation

Follow these cleaning instructions unless you are told otherwise by your healthcare professional. Prior to cleaning, take apart all parts of your breastpump accessory kit. Be especially sure to remove the valve from the breastshield and separate the membrane from the valve prior to cleaning.

Prior To First Use

To Sterilize in the Hospital:

All disassembled parts can be autoclaved to a maximum of 272° F for 3 minutes at 29 PSIG or 250° F for 15-20 minutes at 15 PSIG.

To avoid damage during and immediately after sterilization:

- Sterilize parts without applying external pressure to them.
- Allow parts to cool before applying external pressure.

If gas sterilization is used, residual testing is recommended to determine the proper length of aeration.

To Sanitize at Home:

Disassemble all parts of your kit that come in contact with the breast or milk and sanitize by boiling for 10 minutes.

After each use:

- Disassemble and wash all parts that come in contact with the breast and milk in warm soapy water.
- Rinse in clear water.
- Air-dry on clean towel and cover parts when not in use.

All parts may also be washed in top rack of dishwasher.

For Quicker Cleaning:

Medela offers Quick Clean™ Micro-Steam™ Bags for daily kit disinfection.

Tubing Care:

Inspect tubing after each pumping session for condensation and or milk.

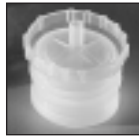
If condensation appears in tubing:

To eliminate condensation after you have completed pumping, continue running the pump with the tubing attached for another 1-2 minutes or until dry.

If milk appears in tubing:

1. Turn off the pump and unplug from power source.
2. Remove and disassemble the tubing, pump connector, piston, cylinder and filter (parts vary by pump used). Except for filter*, wash in soapy water, then rinse in clear cold water. Clean the filter by rinsing in warm water without soap.
3. Shake water droplets out of tubing and hang to air-dry. For faster drying, attach tubing to pump and run pump 1-2 minutes or until dry, or pour a small amount of isopropyl alcohol through the tubing to dry.

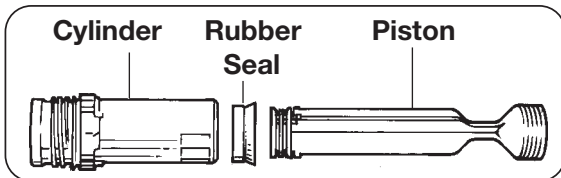
*If using Classic Breastpump parts, DO NOT USE SOAP, ONLY WATER, TO CLEAN FILTER. See page 10, #2 for cleaning instructions.



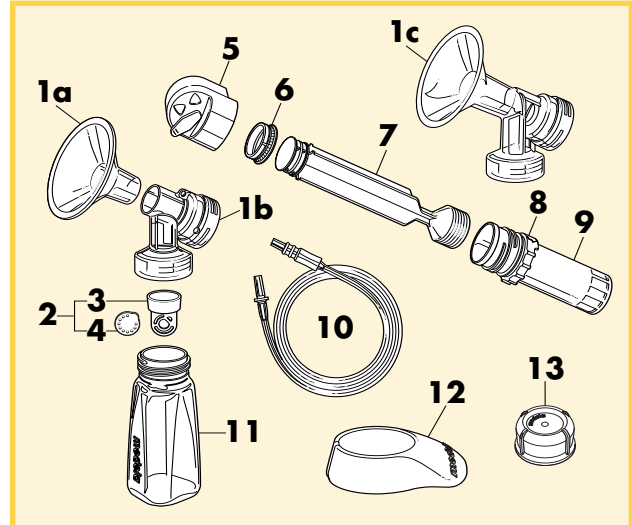
Classic™ Filter

Care of Piston/Cylinder Assembly:

The inside of the cylinder must be smooth and free of buildup to ensure long-lasting performance of the rubber seal. Clean the cylinder, rubber seal, and vacuum regulator every few pumpings with lukewarm soapy water or a vinegar and water solution to keep these parts working efficiently. In addition, rotate the piston in the cylinder every few pumpings to ensure even wear. Only sterilize/sanitize these parts when the presence of milk is evident. Be sure the rubber seal is completely dry before using.



Lactina® Breastpump Kit Parts



Item	Order Number
1a. PersonalFit™ Breastshield, Standard (24mm).....	87073
1b. PersonalFit Breastshield Connector	87071
1c. Breastshield (1-piece)	8107089
2. Valve Assembly (2-Part)	8000001
3. Valve	8100475
4. Membrane	8207013
5. Pump Connector with Plug	8000649
6. Rubber Seal	8200078
7. Piston.....	8100494
8. Vacuum Regulator Ring	8200066
9. Cylinder	8100717
10. Tubing.....	8007179
11. Milk Collection Container.....	8117009
12. Container Stand.....	8100462
13. Solid Lid for Collection Container	8107057
14. Instruction Manual English/Spanish (not shown)	1547477
15. Instruction Manual English/French (not shown)	1547476

Call for pricing

Breastpump kits come with either 1-piece breastshields or PersonalFit Breastshields.

Lactina® Electric Breastpump Kit Instructions

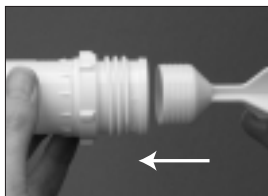
Some pre-assembly may already be completed.

1 Follow cleaning instructions on pages 2-4.

2 Slip rubber seal onto piston until it snaps into place—the larger side faces the handle. To ensure proper seal, hold rubber seal firmly and twist piston.



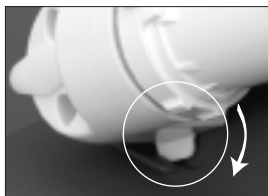
3 Slide vacuum regulator ring onto cylinder, if not already done. Push handle end of piston into cylinder.



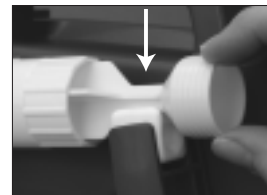
4 Screw cylinder tightly into pump connector.



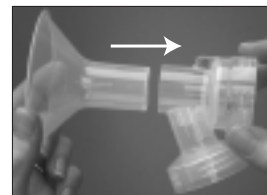
5 Attach pump connector to Lactina, and rotate until tab is secure.



6 Push piston into pumping arm, and rotate until snug in clamp.



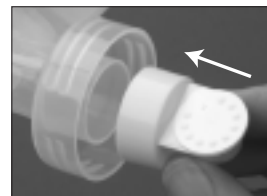
7 If 2-piece breastshield assembly: Make sure breastshield and connector are securely attached.



8 Snap membranes onto valves until membranes lie completely flat.



9 Push assembled valve & membrane onto connectors/breastshields.



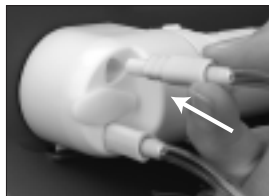
10 Screw containers onto connectors/breastshields.



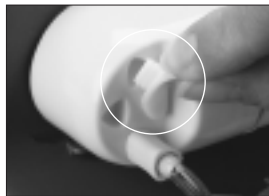
11 Insert clear ends of tubing into openings in connectors/breastshields.



12 Insert other ends of tubing into ports on pump connector.



13 If single pumping: insert plug into unused port.



14 Set vacuum regulator ring to "MIN." Adjust for comfort once pumping begins.

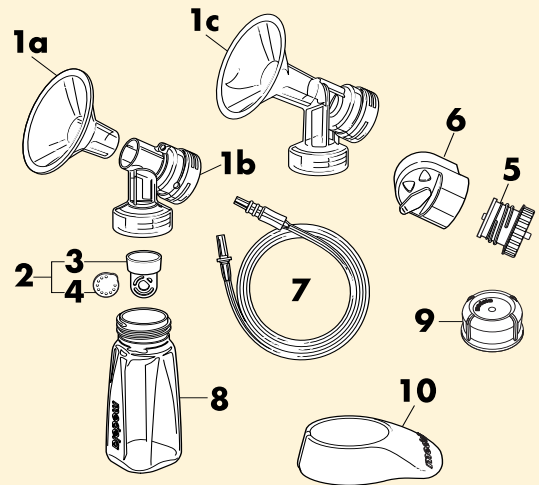


15 Center breastshields over your nipples and start pumping.



Important note: If you experience discomfort, contact your lactation professional as you may need a different size breastshield or other device. To locate Medela products or a breastfeeding specialist in your area, call 1-800-TELL-YOU or visit www.medela.com.

Classic™ Breastpump Kit Parts



Item	Order Number
1a. PersonalFit Breastshield, Standard 24mm	87073
1b. PersonalFit Breastshield Connector	87071
1c. Breastshield (1-piece)	8107089
2. Valve Assembly (2-Part)	8000001
3. Valve	8100475
4. Membrane	8207013
5. Filter for Classic	8007064
6. Pump Connector with Plug	8000649
7. Tubing.....	8007179
8. Milk Collection Container.....	8117009
9. Solid Lid for Collection Container	8107057
10. Container Stand	8100462
11. Instruction Manual English/Spanish (not shown).....	1547477
12. Instruction Manual English/French (not shown).....	1547476

Call for pricing

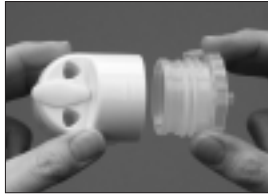
Breastpump kits come with either 1-piece breastshields or PersonalFit Breastshields.

Classic™ Electric Breastpump Kit Instructions

Some pre-assembly may already be completed.

1 Follow cleaning instructions on pages 2-4.

2 Screw filter tightly into pump connector. Note: the filter is designed to prevent overflow into the breastpump. If liquid comes in contact with the filter, it will become impermeable and will work again only after it has been washed and dried. Clean the filter by rinsing it in warm water. **DO NOT USE SOAP TO CLEAN THE FILTER. DO NOT USE ANYTHING ABRASIVE. DO NOT TOUCH THE FABRIC PART OF THE FILTER.** Let the filter air dry for 2-3 hours, or use a hair dryer for 10 minutes.



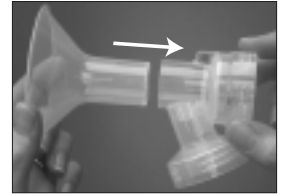
3 Push pump connector into container holder, and rotate until tab is secure. If your pump does not have a container holder, proceed to #4.



4 Connect angle piece to filter.



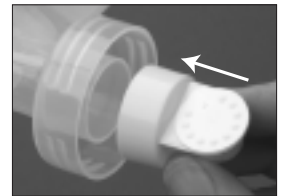
5 If 2-piece breastshield assembly: Make sure breastshield and connector are securely attached.



6 Snap membranes onto valves until membranes lie completely flat.



7 Push assembled valve & membrane onto connectors/breastshields.



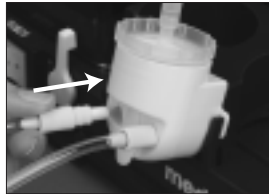
8 Screw containers onto connectors/breastshields.



9 Insert clear ends of tubing into openings in connectors/breastshields.



- 10 Insert other ends of tubing into openings on pump connector.



- 11 If single pumping: insert plug into unused port.



- 12 Set the vacuum regulator to "MINIMUM." Adjust for comfort once pumping begins.



- 13 Center breastshields over your nipples and start pumping.



Important note: If you experience discomfort, contact your lactation professional as you may need a different size breastshield or other device. To locate Medela products or a breastfeeding specialist in your area, call 1-800-TELL-YOU or visit www.medela.com.

Manual Breastpumping

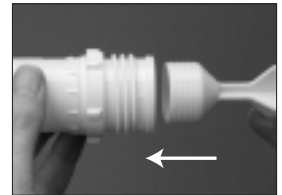
You will be able to pump manually with the following electric breastpump accessory kits: Manualelectric Breastpump #67100(S), Universal Pumping System #67093(S) and the Lactina Pumping System #67094(S).

- 1 Follow cleaning instructions on pages 2-4.

- 2 Slip rubber seal onto piston until it snaps into place—the larger side faces the handle. To ensure proper seal, hold rubber seal firmly and twist piston.



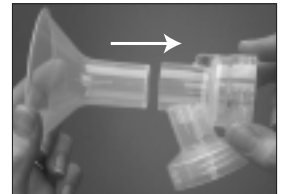
- 3 Slide vacuum regulator ring onto cylinder, if not already done. Push handle end of piston into cylinder.



- 4 Screw cylinder into back of connector/breastshield.



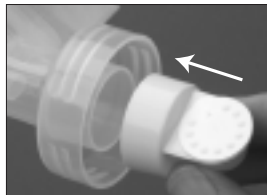
- 5 If 2-piece breastshield assembly: Make sure breastshield and connector are securely attached.



- 6 Snap membrane onto valve until membrane lies completely flat



- 7 Push assembled valve & membrane onto breastshield assembly.



- 8 Screw container onto connector/breastshield.



- 9 Center breastshield over your nipple and start pumping.



Important note: If you experience discomfort, contact your lactation professional as you may need a different size breastshield or other device. To locate Medela products or a breastfeeding specialist in your area, call 1-800-TELL-YOU or visit www.medela.com.

Storing Breastmilk

Check with your hospital for specific storage instructions.

When freezing, do not fill containers more than 3/4 full to allow space for expansion. Label containers with the date of pumping.

Breastmilk Storage (For Healthy Term Babies)					
	Room Temperature	Cooler with 3 Frozen Ice Packs	Refrigerator	Self-contained Refrigerator Freezer Unit	Deep Freezer
Freshly expressed breastmilk	4 hours at 66-72°F (19-22°C) ¹	24 hours at 59°F (15°C) ¹	5-7 days at 32-39°F (0°-4°C) ²	3-4 months ³	6-12 months at 0°F (-19°C) ³
Thawed breastmilk (previously frozen)	Do not store	Do not store	24 hours ⁴	Never refreeze thawed milk	Never refreeze thawed milk

¹ Hamosh M, Ellis L, Pollock D, Henderson T, and Hamosh P: Pediatrics, Vol. 97, No. 4, April 1996. pp 492-497. (4 hours at 77° F/25° C).

² Sosa, Roberto; Barnes, Lewis: AJDC, Vol. 141, Jan. 1987.

³ Lawrence R, and Lawrence R: Breastfeeding: A Guide For the Medical Profession, 1999, p.894.

⁴ Arnold L; Recommendations for Collection, Storage and Handling of a Mother's Milk for Her Own Infant in the Hospital Setting, 3rd Edition. The Human Milk Banking Association of North America, Inc. 1999, p. 18.

Important Note: If the temperature in the room, car or outdoors exceeds 77° F / 25° C, chill milk immediately to preserve freshness.

Thawing frozen breastmilk:

- Thaw frozen breastmilk by holding the container under warm water. Milk may be defrosted in the refrigerator overnight. Gently shake the container to blend any fat that has separated.

Caution:

- Do not thaw frozen breastmilk in a microwave or in a pan of boiling water.
- If adding expressed breastmilk to container of already frozen breastmilk, make sure to add a lesser amount than the already frozen amount.

Troubleshooting

If There Is Low or No Suction

- Make sure all connections of kit and breastpump are secure.
- Make sure membrane is lying flat against valve head. Refer to the assembly instructions.
- Make sure the clear ends of the tubing fit securely into breastshield assemblies and the other ends into the ports on the pump connector.
- In the US, call Medela at 800-435-8316 or 815-363-1166. In Canada, call Medela at 800-435-8316 or 905-608-7272. In other countries, contact your local distributor or the location where you purchased your pump. Visit us on the internet at www.medela.com.